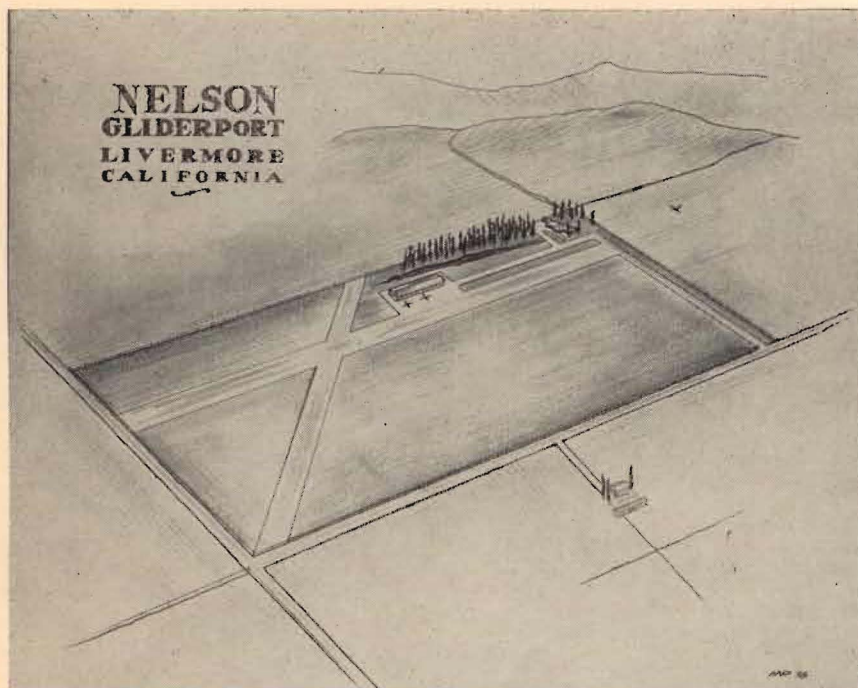


THE "HUMMINGBIRD HAVEN" NELSON GLIDERPORT

by TED NELSON

For a number of years I have had a desire to own a piece of property near a soaring site which would be large enough to be able to take off and land our gliders and at the same time be desirable enough to build our home where my family and I could live comfortably the rest of our lives. I believe I have located such a piece

are from the west and blow across the property and up the hills, creating ridge soaring conditions that would allow a glider to come down within several hundred feet of the ground and still be able to glide into the airport. The property consists of 80 acres and is approximately 2700 ft x 1400 ft. We have the main runway



Harry N. Perl's impression of Ted Nelson's "Hummingbird Haven" Gliderport.

of property and we hope to start building on it within the next few months.

The site will be known as the "Hummingbird Haven," and I feel sure it will be the center of the glider activity in the San Francisco Bay Area. It is located in the southeast end of the Livermore Valley approximately 30 miles from Oakland, and the 80 acres is right at the base of the Altamont hills. It is located approximately where glider activity was originally started in this area and affords ridge soaring, thermal soaring, and in the winter season wave conditions. The prevailing summer winds

running the long direction and is into the prevailing winds, laying east and west. The cross runway is approximately 2100 ft. and would be used on strong north-wind days. Both runways are now graded and rolled and have grass seed planted, which should make ideal sod runways for future use. We are constructing a hangar which will house 10 assembled gliders and a tow plane and also provide for a work shop of approximately 25 ft. x 45 ft. and a lounge or meeting room of approximately 20 ft. x 40 ft. We hope to equip the lounge room with furniture so that spectators and families can enjoy themselves while

the glider guiders are up flying. We are fortunate in having located on the northeast corner of the property a grove of eucalyptus trees which we plan to take advantage of. On the east end I plan to build our home, and will have it surrounded by the trees for shade. It is also our plan to put in a small swimming pool in the near future as well as picnic tables, benches, and barbecue pits. Toilet facilities, water, etc., will be available. These facilities will be made available to members of our soaring club as well as their relatives and guests. Minimum dues and hangar rent will eventually, we hope, pay back the investment I am making in these facilities in the next 6 or 8 years. In the meantime we are creating a soaring site which we hope will encourage and develop much more interest in the soaring activity than has been shown in the past.

The advantages of our new site seem to sum up to the following, which I think are quite important: Most flying will be done within sight of the takeoff where the pilot's wife, children, or girl friend can watch him perform, thus have reason to stay around the airport while he is flying. The picnic grounds will provide interest in something to do; also be a picnic in the country, so to say. Of course the hangar allows the ships to be kept assembled, thus more of the club members will come out to fly knowing they don't have to assemble or disassemble a ship each day.

It is hoped that some time before July we will be well along with our project and have gliders flying from the field.

Sailplane and Gliding . . .

A Bi-Monthly Magazine Entirely
Devoted to Motorless Flight

Editor

DR. A. E. SLATER,
M.A., F.R.Met.S.

The official organ of the
British Gliding Association
per copy 50¢ post free
annual subscription \$3 post free

Direct From

**The British
Gliding Association**

Londonderry House
19 Park Lane, London, W. 1