

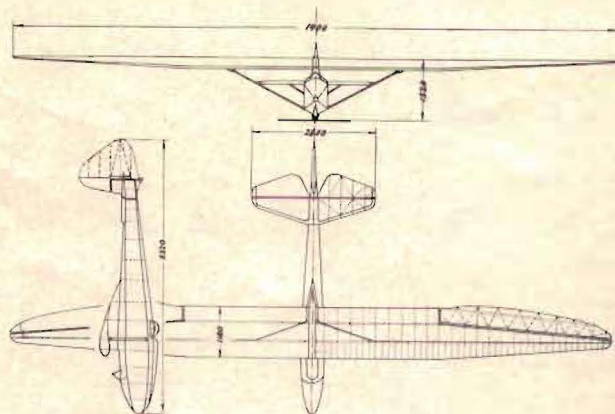
Göppingen-1 Utility Sailplane TYPE "WOLF"

In Germany, the Aeronautical Inspection Office is ever watchful of the flying characteristics found in the sailplanes of that country. It happened that several ships flying blind had tumbled out of the clouds with their wings broken off. The office investigating the matter discovered that sailplanes had to be flown with opposite aileron when making steep banks. (If not, the banks would constantly become steeper and steeper.) This characteristic proved dangerous in blind flying, and as a result of it many ships were torn apart by the extremely high stresses encountered in steep spiral dives, and a few lives were lost. Newer regulations provided that in order to receive an approved type certificate absolute stability was demanded, in order to avoid future accidents of the same nature.

The G-1 is the outcome of serious development work undertaken to meet these new requirements for stability. It is one of the few sailplanes which is laterally stable, and if placed in a steep spiral can be flown "hands off", still maintaining the proper degree of bank. The ship can be made to recover normal flight position by merely applying rudder, and when placed in a steep dive and released, will automatically recover and assume the attitude of normal glide. These exceptional qualities do not hamper the maneuverability or sensitiveness of controls. It is said that powerplane pilots, accustomed to the feel of motorplanes, are thoroughly at home in the Göppingen One, since its flight characteristics and control parallel that of a light airplane.

Wolf Hirth, the famous designer of this little sailplane, designed it with the intention of creating a real utility sailplane for all-round use, that could be used as the last step to real high performance jobs. We believe that he has been entirely successful in acquiring these ends, and those who have already flown this plane have been more than pleased with its general handling and soaring qualities.

The sturdy construction of the type "Wolf" enables hard landings to be made without damage and allows this plane to appear on the extremely small list of sailplanes approved for aerobatics.



Göppingen I

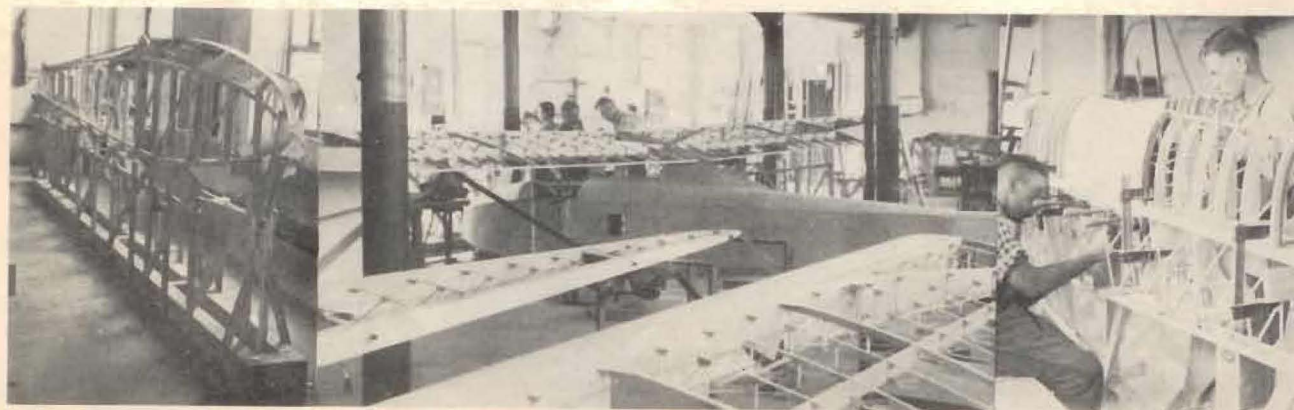
SPECIFICATIONS

Wing span—45 ft.
Length—20 ft.
Wing area—162 sq. ft.
Aspect ratio—1:14
Empty weight—290 lbs.

Useful load—200 lbs.
Total weight—450 lbs.
Gliding angle—17:1
Sinking velocity—3 ft. per sec.



Göppingen I in Flight



Construction of G-1